

Western Australian Rogaining Association

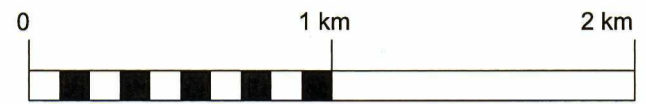
# The Sardine Sprint

## WARA 12 Hour USD Rogaine

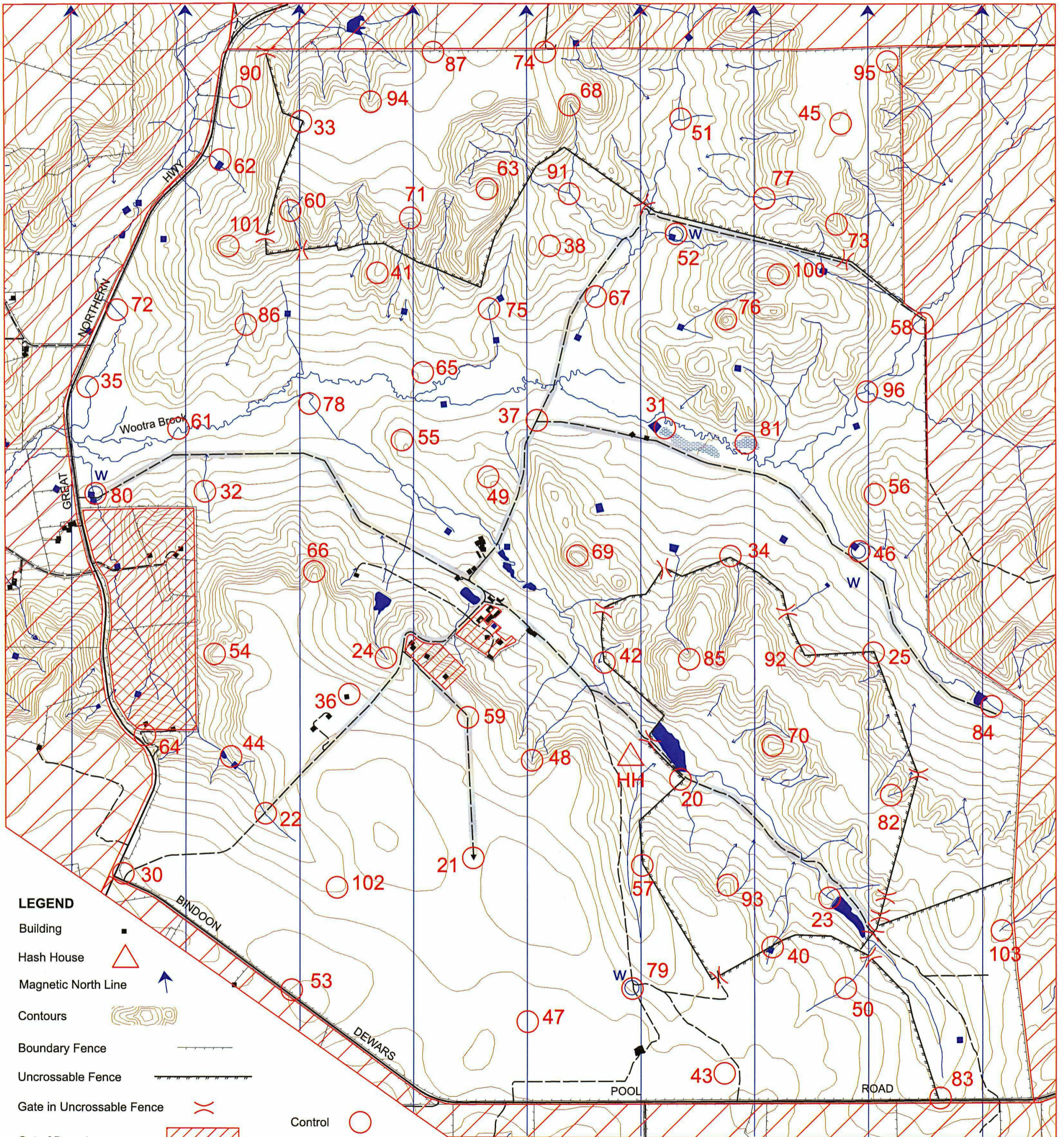
### 23 -24 Feb 2012



Department of Sport and Recreation



SCALE 1:25,000, 5 metre contour interval



#### LEGEND

- Building
- Hash House
- Magnetic North Line
- Contours
- Boundary Fence
- Uncrossable Fence
- Gate in Uncrossable Fence
- Out of Bounds
- Road, Bitumen
- Track, Gravel
- Patrolled Road

- Control
- Swampland
- Dams
- Watercourse
- Water Drops

This map was produced using OCAD. Data supplied by DOLA and used under copy licence 393/93. Possession of this map does not give right of entry to this area.

Special thanks to Geoff Hendriks, Kevin Marshall and the Catholic Agricultural College for land access permission, camping area, and assistance with event planning, and to Craig Derma and Vikki Redden for last minute help hanging controls.

#### SETTERS

Doug Goodale  
John Goodale

#### VETTERS

Dave Longman

# The Sardine Sprint Rogaine. WARA USD 12 Hour Rogaine, 23 & 24 February 2013

No.	Description	Points	No.	Description	Points	Important Information
20	The fence corner	20	61	The brook	60	
21	The sheep yard	20	62	The dam	60	<b>Control Cards</b> From 1930 Saturday
22	The culvert	20	63	The knoll	60	
23	The watercourse	20	64	The fence corner	60	
24	The watercourse	20	65	A fence corner	60	<b>Briefing</b> 1945 Saturday
25	The fence bend, North side	20	66	The spur	60	
			67	A bend in the watercourse	60	
30	The front gate	30	68	The top of the watercourse	60	
31	The dam	30	69	The Holy Knolly	60	<b>Start</b> 2000 Saturday
32	The tank on the watercourse	30				
33	The fence corner, West side	30	70	The knoll	70	<b>Finish</b> 0800 Sunday
34	The fence bend, North side	30	71	The head of the watercourse	70	
35	The watercourse	30	72	The watercourse	70	
36	The shed	30	73	The spur, on the track	70	<b>Hash House</b> Opens at ??? Sat Closes by ??? Sun
37	The track junction	30	74	The fence junction	70	
38	The saddle	30	75	The watercourse	70	
			76	The rocky knoll	70	
40	The dam wall, south side of fence	40	77	The watercourse	70	<b>Sunset</b> 1857
41	The spur	40	78	The bend in the watercourse	70	
42	A fence corner	40	79	The track junction	70	<b>Silvery Moonrise</b> 1705
43	The airstrip, East	40				
44	Between two dams	40	80	The dams	80	
45	The broad knoll	40	81	The centre of a swamp	80	
46	The dam	40	82	The head of a watercourse	80	<b>Sunrise</b> 0601
47	A stand of trees	40	83	The fence corner	80	
48	A watercourse junction	40	84	The watercourse	80	
49	The spur	40	85	The top of the watercourse	80	<b>Silvery Moonset</b> 0322
			86	The shallow gully	80	
50	The watercourse	50	87	The fence junction	80	<b>Late Penalty</b> 10 points per minute or part minute.
51	The watercourse junction	50				
52	The dam	50	90	The tomb of the unknown rogainer	90	
53	The happy boulder, fence corner 20m East	50	91	The watercourse junction	90	
54	The spur	50	92	The fence bend, North side	90	
55	The broad-knoll	50	93	The spur	90	
56	The knoll	50	94	The top of the watercourse	90	
57	The fence corner	50	95	The head of the watercourse	90	LATE (no points) later than 0830 Sunday
58	The fence corner	50	96	The watercourse junction	90	<b>Controls Used</b> 74
59	A fence bend, on the track	50				
			100	The knoll	100	
60	The watercourse junction	60	101	The spur, on the fence	100	<b>Total Points</b> 4260
			102	A watertank	100	
			103	The top of the watercourse	100	

**Water Drops:** At Controls 80, 79, 52, 46  
If you are injured please make your way to a water drop or a patrolled road and wait there for help.

**Patrolled Roads.** See roads indicated on the map